

METAL FABRICATING NEWS

Marshall Erdman & Associates Providing Quality for Nearly 50 Years

Waukegan, a picturesque town of around 8000 people, is nestled in the rolling countryside of south central Wisconsin. This tidy community is the home of Marshall Erdman & Associates manufacturing plant, a company that specializes in the design and construction of medical buildings. In addition to being a design build architectural firm, the company is also a manufacturer of high quality commercial cabinetry and furniture marketed under the trade name "Techline."

Marshall Erdman founded the company in 1951. Erdman was an architect, by trade, who studied under Frank Lloyd Wright, but he was equally comfortable with manufacturing. Quality was something Erdman was quick to recognize and when he wasn't get-

ting it, he quickly made necessary changes. "I don't want to compete with anyone on common ground" was his philosophy. His goal was to always do better than the competition and this continues in the company's current commitment to excellence and high quality.

Fab Shop Core of Building Operation

James Schaff, Vice President of manufacturing directs operations at the entire Erdman manufacturing facility including the structural fabricating shop. The fab shop, which employs around 20 people, uses Whitney portable hydraulic presses in the fabrication of their medical building components. They also use a Whitney hydraulic shear in the angle shear operation.



Marshall Erdman and Associates' James Schaff, vice president of manufacturing (left) and Paul Marx, superintendent of fabrication point to trusses used in the fabrication of Erdman buildings.

Portable Presses

At the heart of Erdman's structural punching line are a pair of 100-ton Whitney portable hydraulic presses. Beam flanges

Trailers loaded with completed structural components ready for shipment to the construction site.

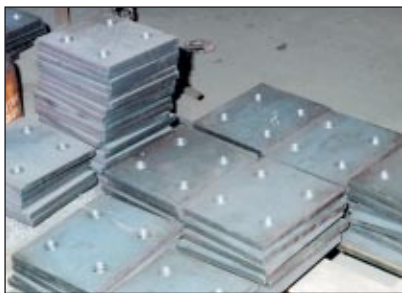




Interior and exterior wall sections being fabricated on a special line.



Marshall Erdman & Associates punches wide flange beams and other structural components with a pair of W.A. Whitney 100 ton capacity flange and web presses.



Base plates and clip angles punched for welding and assembly into structural components



A Model 7609 W.A. Whitney 59 ton hydraulic angle shear is used for shearing bracing angles, clip angles, truss components, and other miscellaneous parts used in Erdman building fabrication. The shear is equipped with infeed/outfeed material handling and part length gaging.



are punched with a Whitney Model 790X6 Flange Press and webs are punched with the Model 791AX18 Web Press. Roller conveyors feed the beams to the presses which are suspended over the work with overhead cranes. The mobility of the presses coupled with beam movement on the conveyors facilitates quick hole punching, typically allowing for the punching of five to six holes in the time it takes to mag-drill one.

Angle Shear

A Whitney Model 7609, 59-ton hydraulic shear equipped with infeed material handling and outfeed gaging makes quick work of cutting bracing angles, clips, angles, truss components and other miscellaneous angle parts. The Model 7609 has capacity to cut up to 6- by 6- by 1/2-inch A-36 structural angle. Cycle time can be adjusted from two to six seconds depending on angle size being sheared.

Marshall Erdman & Associates fabricates from 75 to 100 tons of structural steel a week through its heavy fabricating facility. By bringing these structural building components together with fabricated exterior and interior wall sections, also manufactured at the Waunakee plant, complete medical facilities are constructed right down to their interior cabinetry, furnishings and decorating.

Whitney equipment plays a major part in this company's continuing success and excellence in the building business. ◆



W.A. Whitney Co.
AN ESTERLINE COMPANY

650 Race Street
P.O. Box 1206
Rockford, IL 61105, U.S.A.

Tel: 815-964-6771
Fax: 815-964-3175
www.wawhitney.com